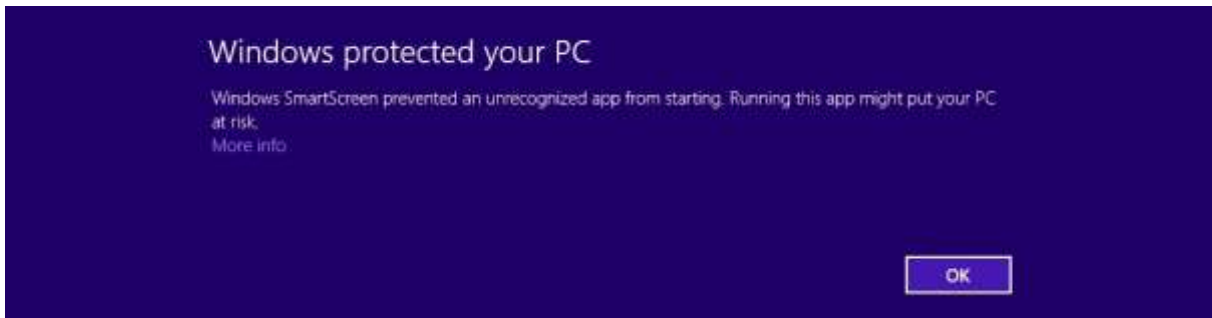
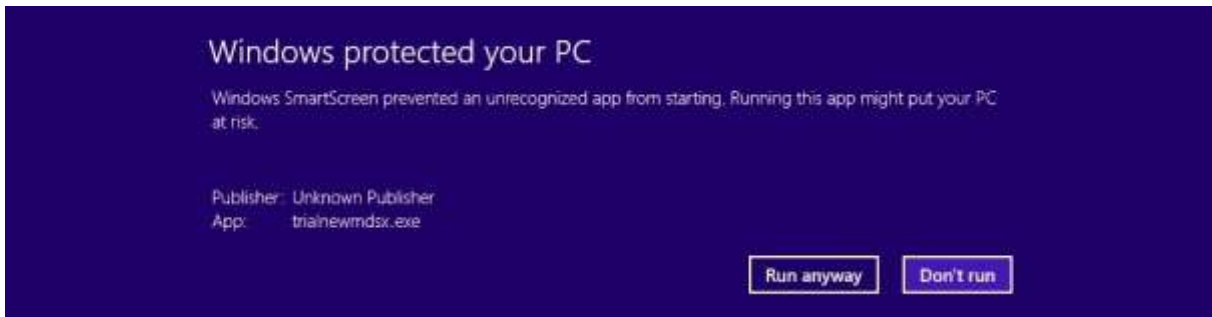


INSTALLING NewMDSX UNDER WINDOWS 8, 8.1 and 10

If installing to Windows 8, 8.1 or 10 you will first see the following potentially alarming message:



Do not press Enter! Be sure to select /click on [More info](#), which is it easy to overlook, thanks to Microsoft Inc.



Then select /click on **Run anyway** to start the installation routine!