

## TO DOWNLOAD AND INSTALL HAMLET II 3.0

The latest version of HAMLET II 3.0 can be downloaded at any time from <http://apb.newmdsx.com/download.html>

**HAMLET II 3.0** computer-assisted text analysis

Click [here](#) for an evaluation copy - or update for existing users :

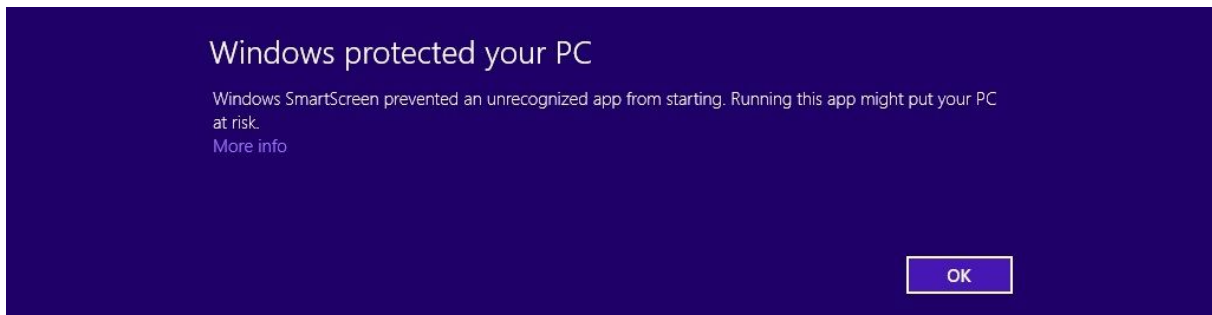
**NEW** **HAMLET II 3.0**  
(MDPREF -style), PINDIS, INDS visualization procedures, and adv Vista, and Windows 7 ~9.15 MB)

Opening hamlet23.exe  
You have chosen to open  
 hamlet23.exe  
which is a: Windows Installer Package  
from: <http://apb.newmdsx.com>  
Would you like to save this file?  
Save File Cancel

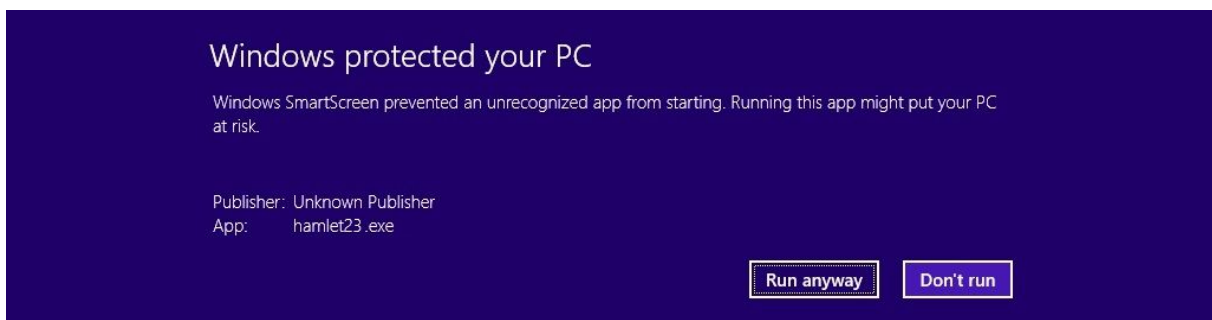
<b>NEW</b>	<a href="#">HAMLET II 3.0 documentation</a>	~1.67 MB are on Linux/Unix	viewer software if you	15.07.2011
	<a href="#">HAMLET II 3.0 tutorial</a>	single executable for Microsoft Windows XP,Vista,7 ~ 2.31 MB		31.12.2010
	<a href="#">HAMLET II on LINUX</a>	~270 Kb .Pdf file - Install and run HAMLET II in a virtual WINE machine on top of Debian GNU/Linux 3.1 Contributed by Bruno Hopp (Central Archive, Cologne/Germany and the Eurolab at the Central Archive). Needs Adobe Acrobat Reader, Xpdf or Kghostview viewer software if you are on Linux/Unix.		30.03.2006

Click on Save File – unless otherwise specified, the installation routine will be placed in your Windows Downloads directory.

If installing under Windows 8, 8.1 or Windows 10 you will first see the following potentially alarming message:



Do not press Enter! Be sure to select /click on **More info**, which is it easy to overlook, thanks to Microsoft Inc.

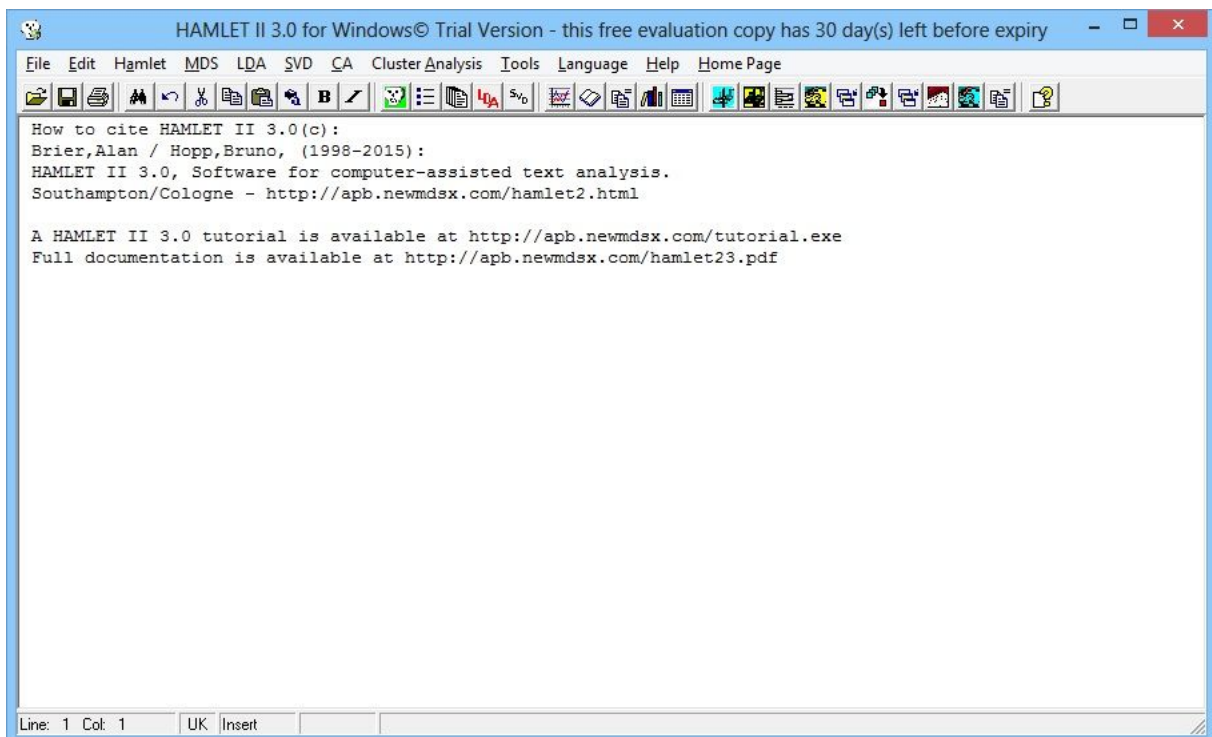


Then select /click on **Run anyway** to start the installation routine!

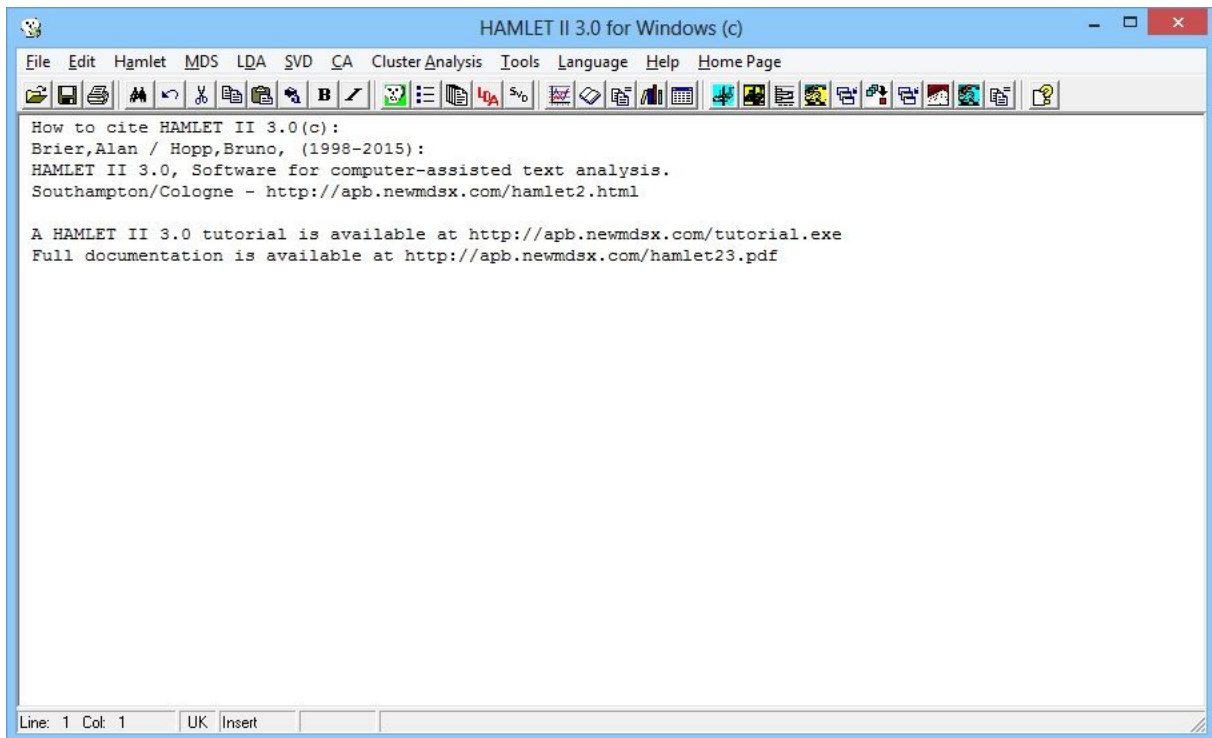
On running the installation routine for the first time on an individual PC a window similar to the following will be displayed:



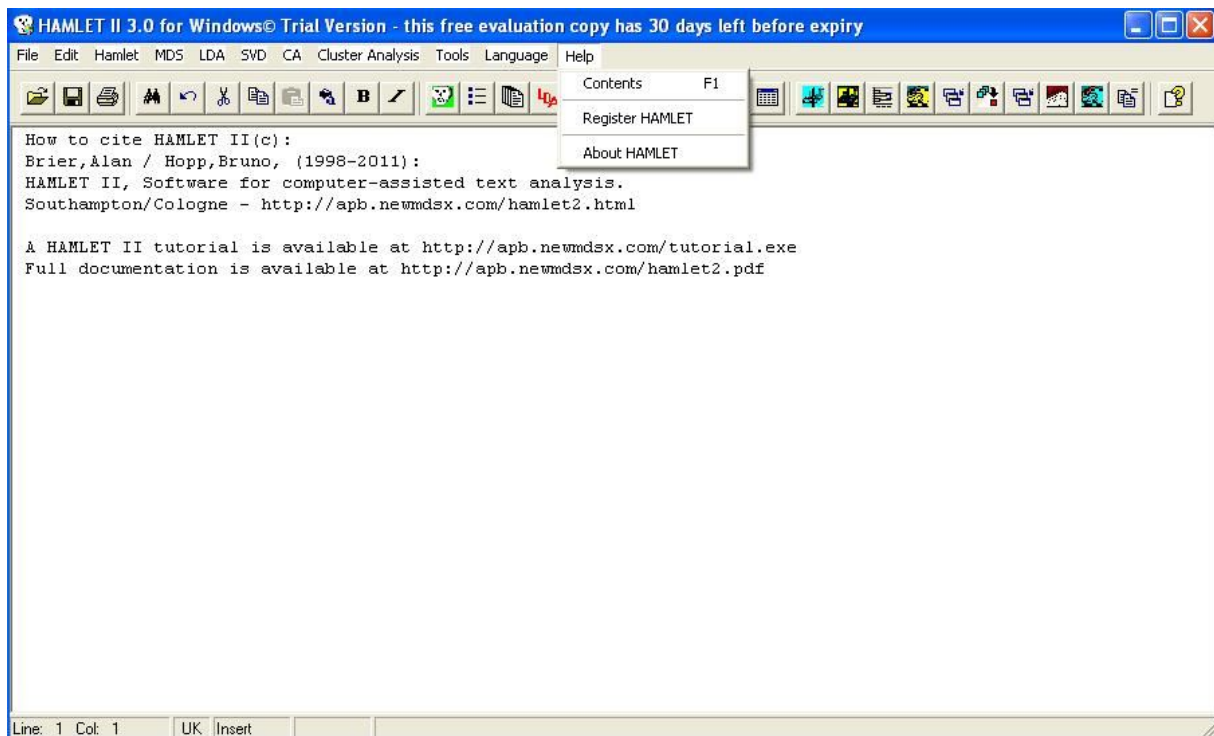
If you have already obtained a registration code (clicking on Register Now displays the necessary information about how to do this) or you are installing the software from a CD copy with an accompanying registration code, this can be entered in the location indicated and installs a full licensed copy with indefinite validity. Otherwise, a free 30-day evaluation copy will be installed:



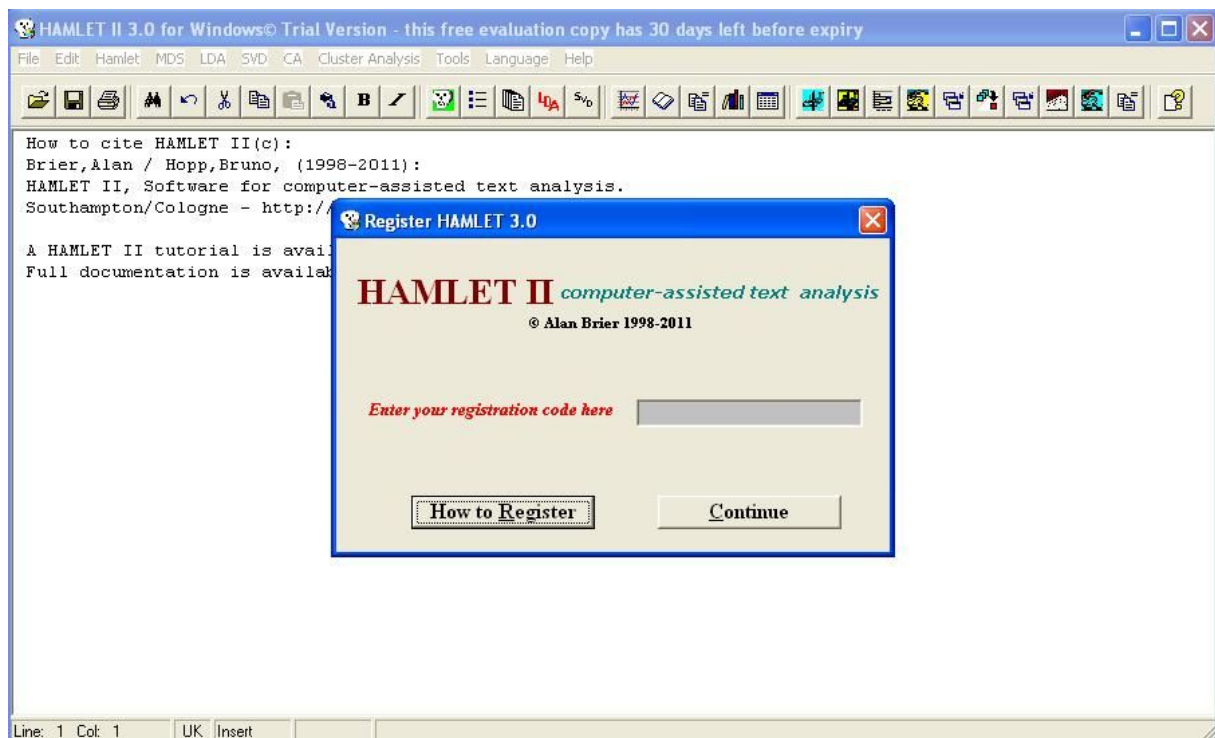
On entering a valid registration code to update the existing copy, this will become a full licensed copy of indefinite validity:



Before the expiry of an evaluation copy, it is possible to obtain and enter a registration code by clicking on the menu item **Help | Register HAMLET** :



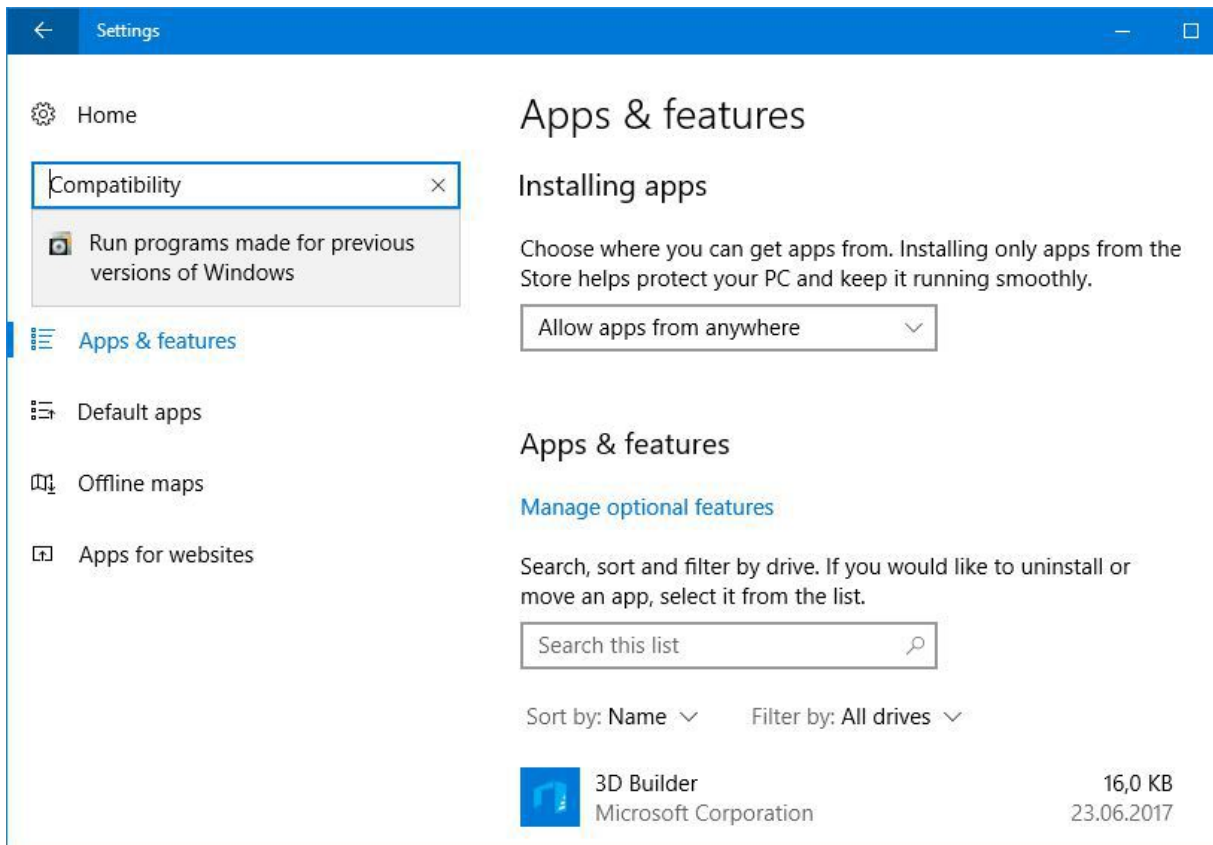
and entering a valid code when you have obtained one in the following window, clicking **Continue** to convert the installed evaluation version to a permanent copy:



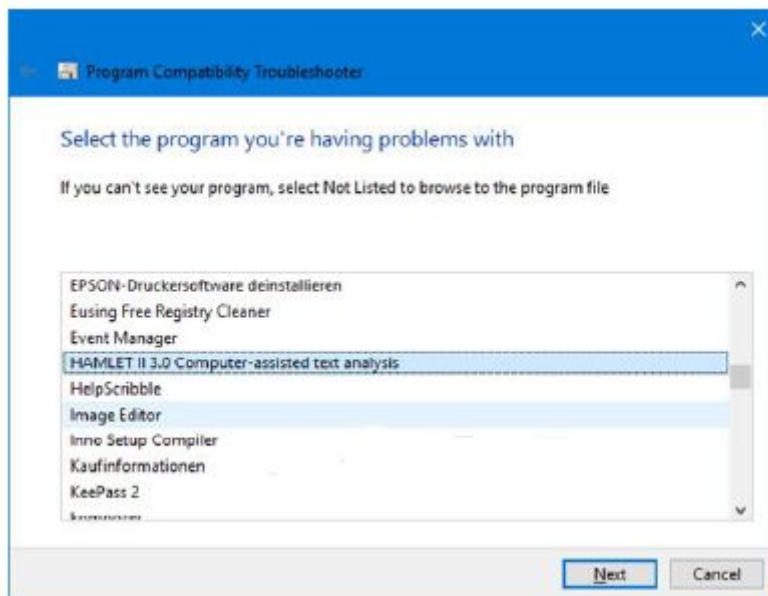
To complete registration, you need to be connected to the Internet, or obtain a full copy capable of being separately installed off-line.

**If you encounter difficulties of compatibility with the version of Windows installed on your PC,** it may help to try running the Windows Program Compatibility Troubleshooter to make appropriate changes to file permissions in the installed copy of **HAMLET II 3.0**. Microsoft unfortunately do not make it particularly easy to access the Troubleshooter in the various versions of Windows.

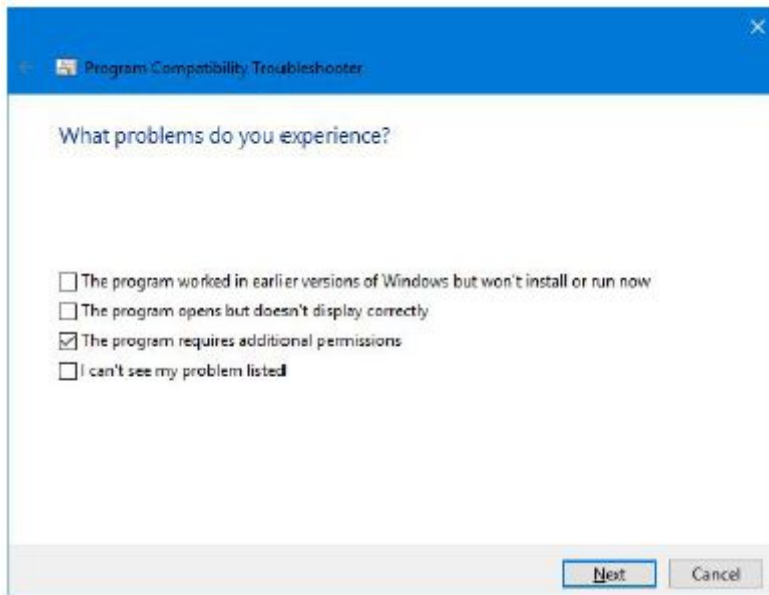
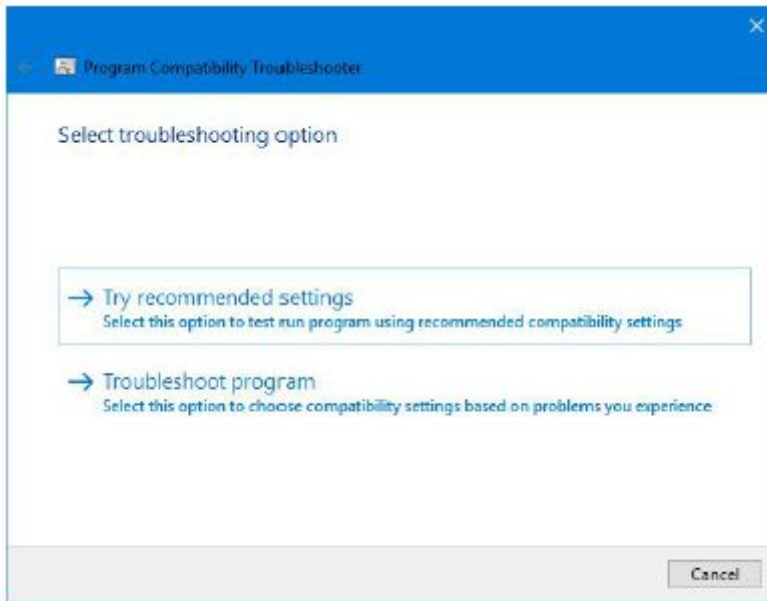
In Windows 10, for example, this can be located from the **Settings** page by searching for 'Compatibility' and selecting the entry "Run programs made for previous versions of Windows".



It is worth working through the following screens when the troubleshooter has identified the installed copy of HAMLET II.



This allows successively testing the program with the recommended compatibility settings. It is also essential to select the second option marked "Troubleshoot program" to ensure that the box relating to additional permissions is checked before closing the Troubleshooter.



In addition to checking the general settings for **HAMLET II 3.0 Computer-assisted text analysis**, the Troubleshooter can also be used if necessary to locate and record compatible settings for routines used by the main program, which can be found in the installed directory. Select "Not Listed" to browse to the program file and change the settings for `Graphic.exe`, `graphic2.exe`, `Threeway.exe`, `DisplayMINISSAresults.exe`, `ThreewayCA.exe` and `Hjf2Indscal.exe` in the event of continued incompatibilities appearing in your HAMLET II 3.0 installation.

Any changed settings then remain in effect for the copy of HAMLET II 3.0 installed on the current computer.